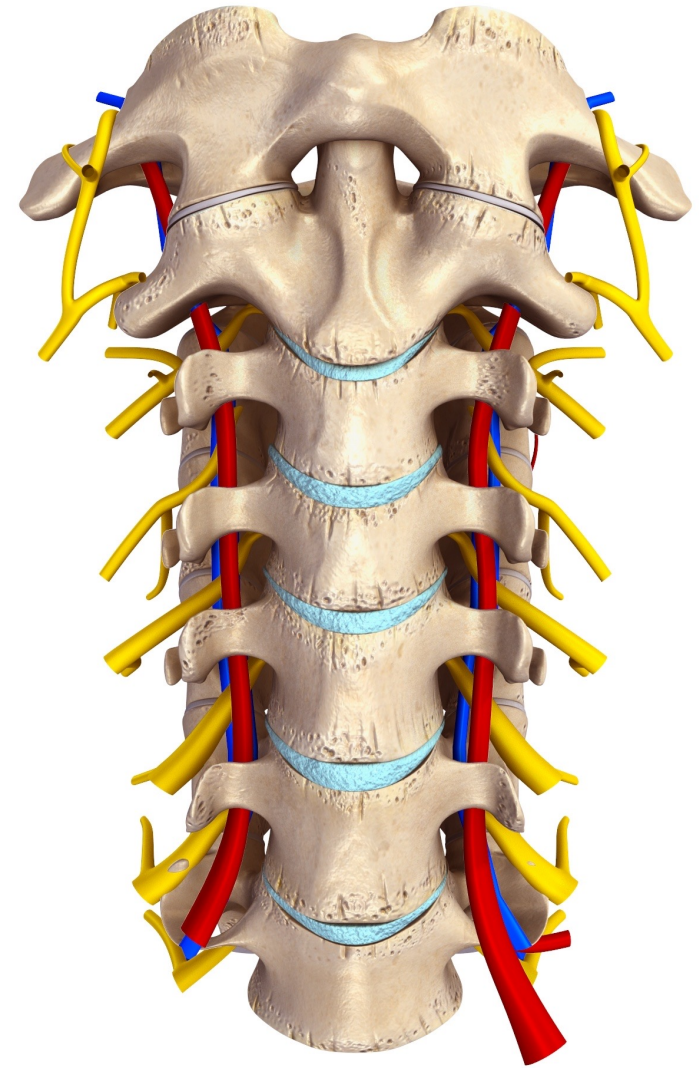


JOINTS TERMINOLOGY LIST

Dr. Lisa Brinn

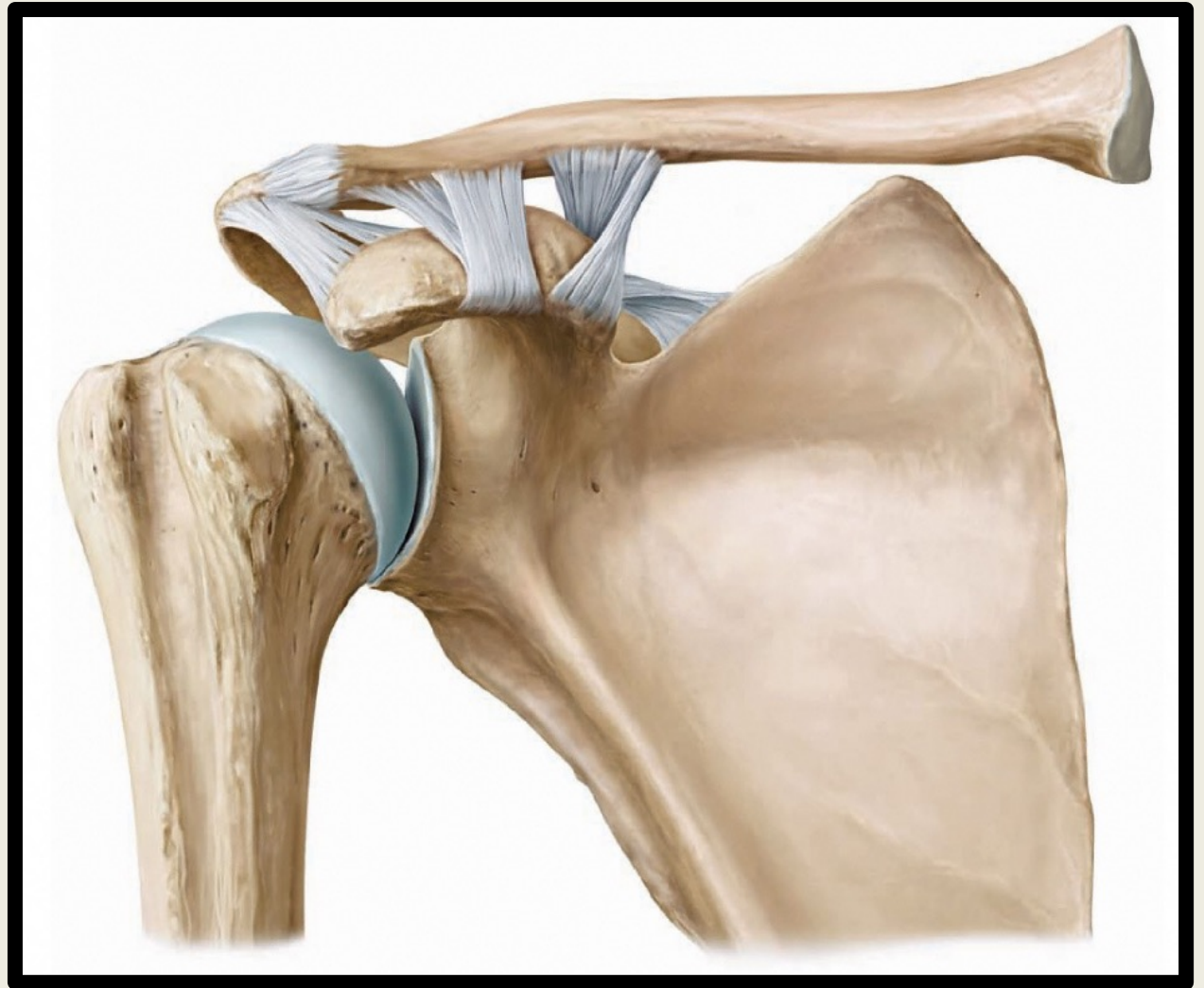
Atlantoaxial Joint

- Atlas
- Axis



Shoulder Joint Bones

- Scapula
- Humerus



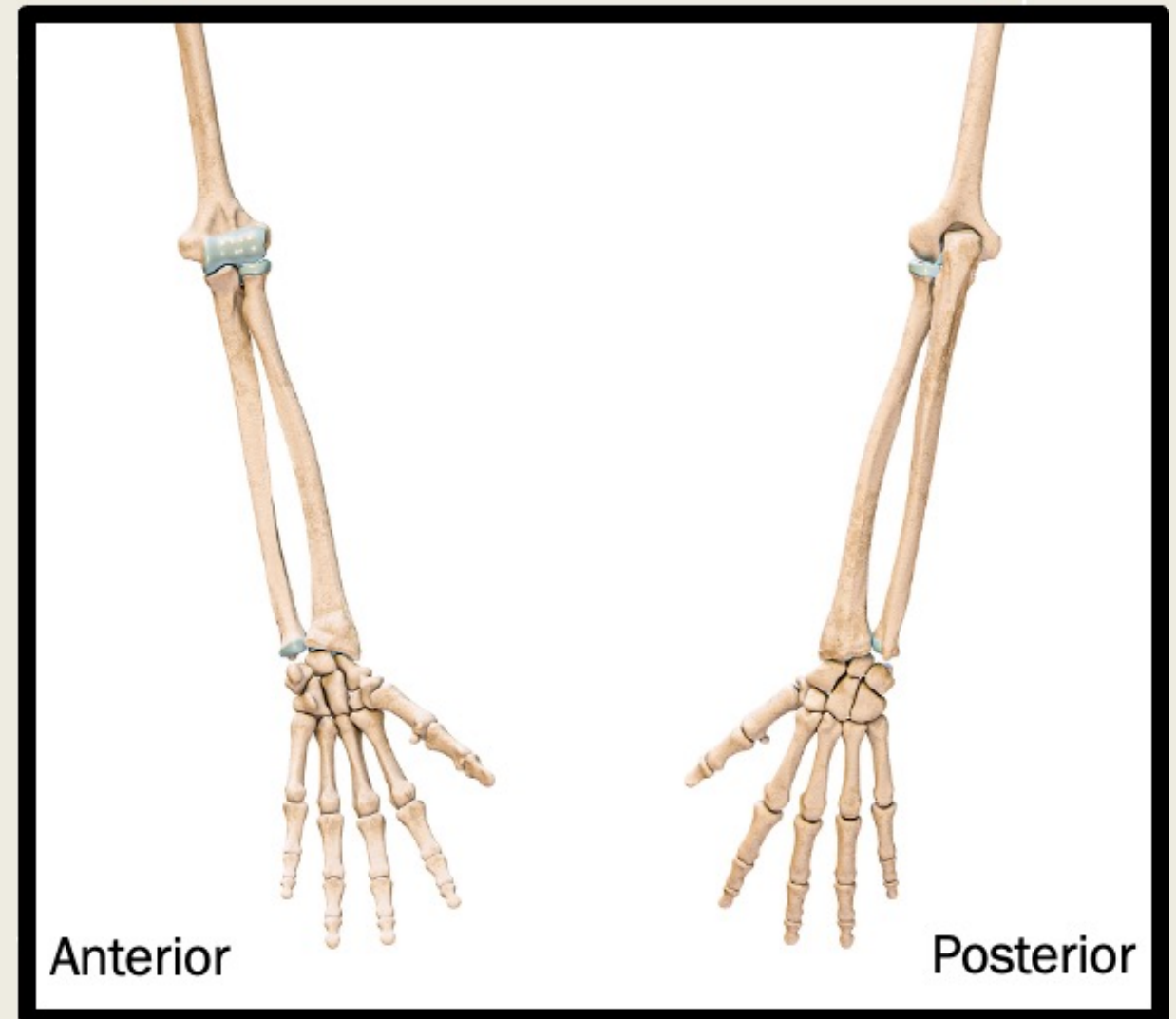
Elbow Joint Bones

- Humerus
- Radius
- Ulna



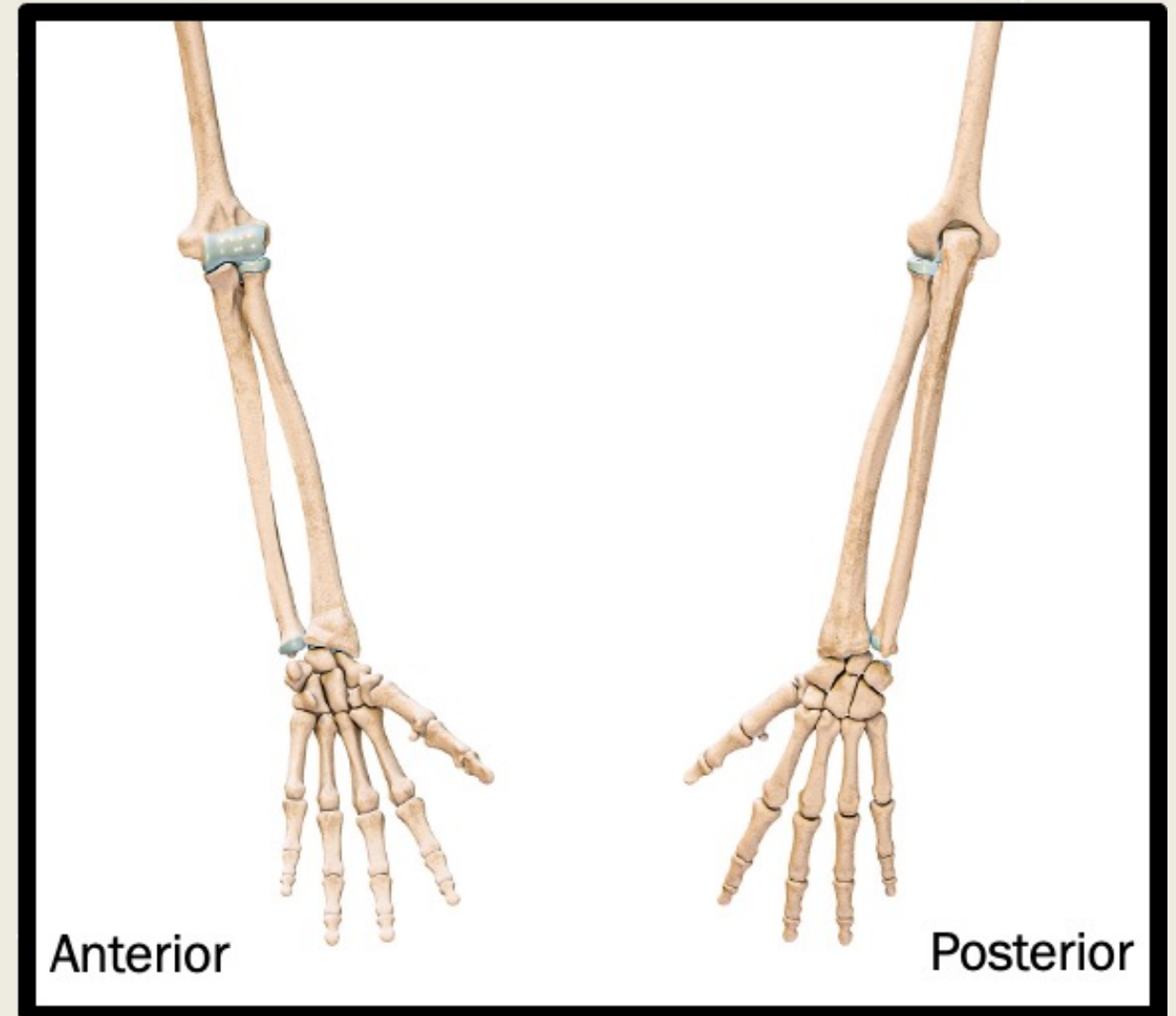
Radioulnar Joint

- Radius
- Ulna



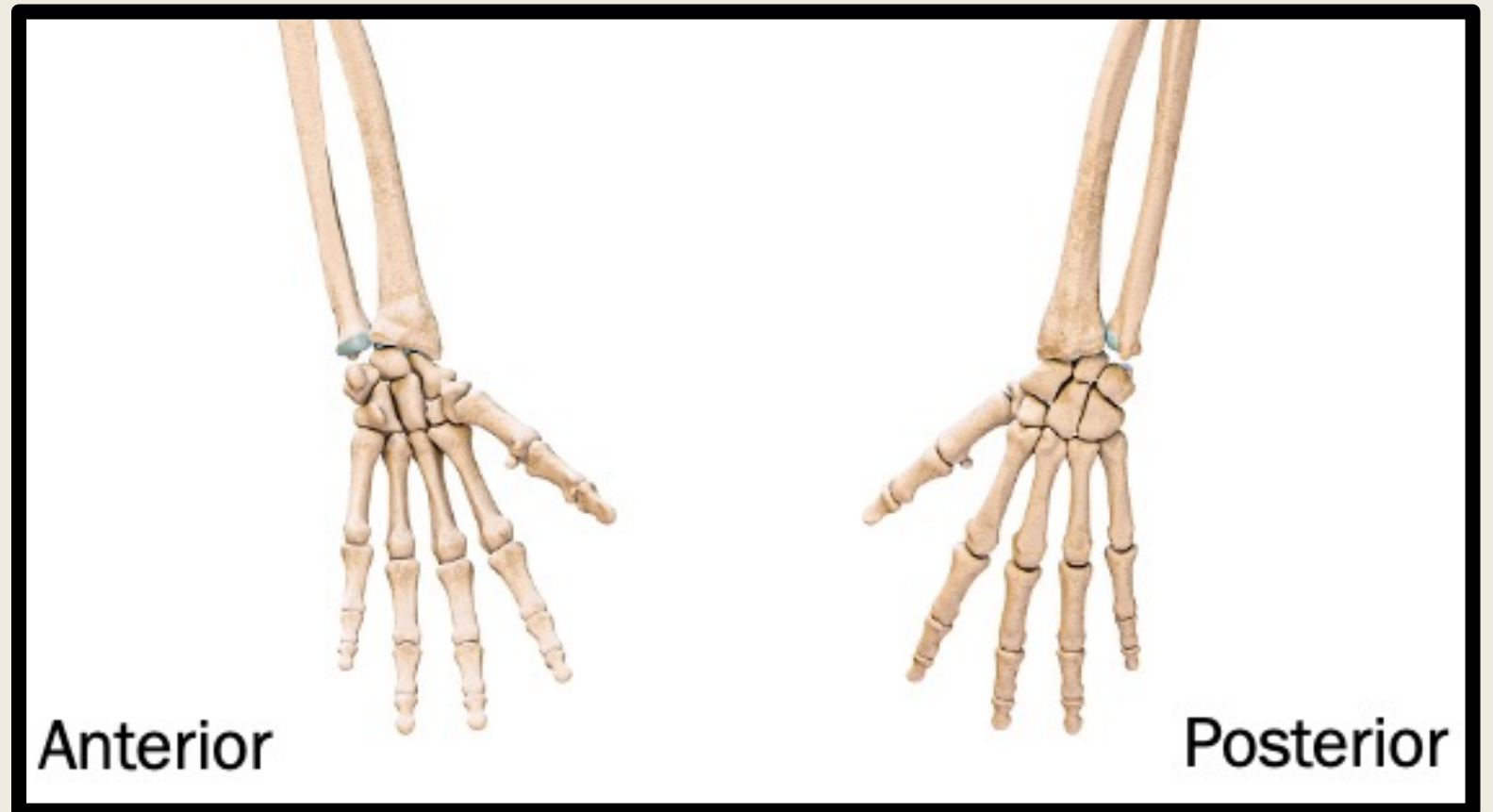
Wrist Joint Bones

- Radius
- Scaphoid
- Lunate
- Triquetrum



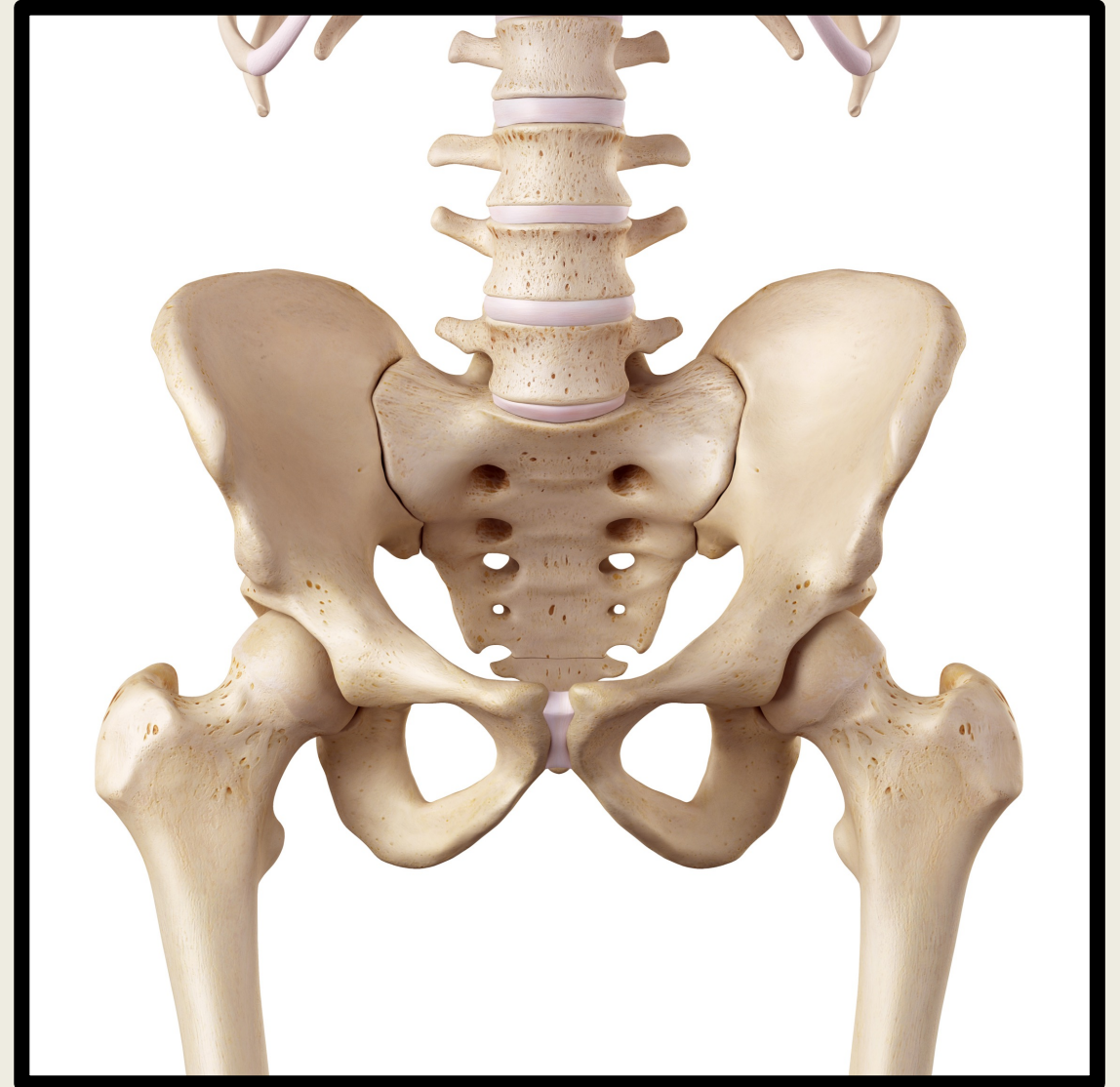
Metacarpophalangeal Joint

- Metacarpals
- Phalanges



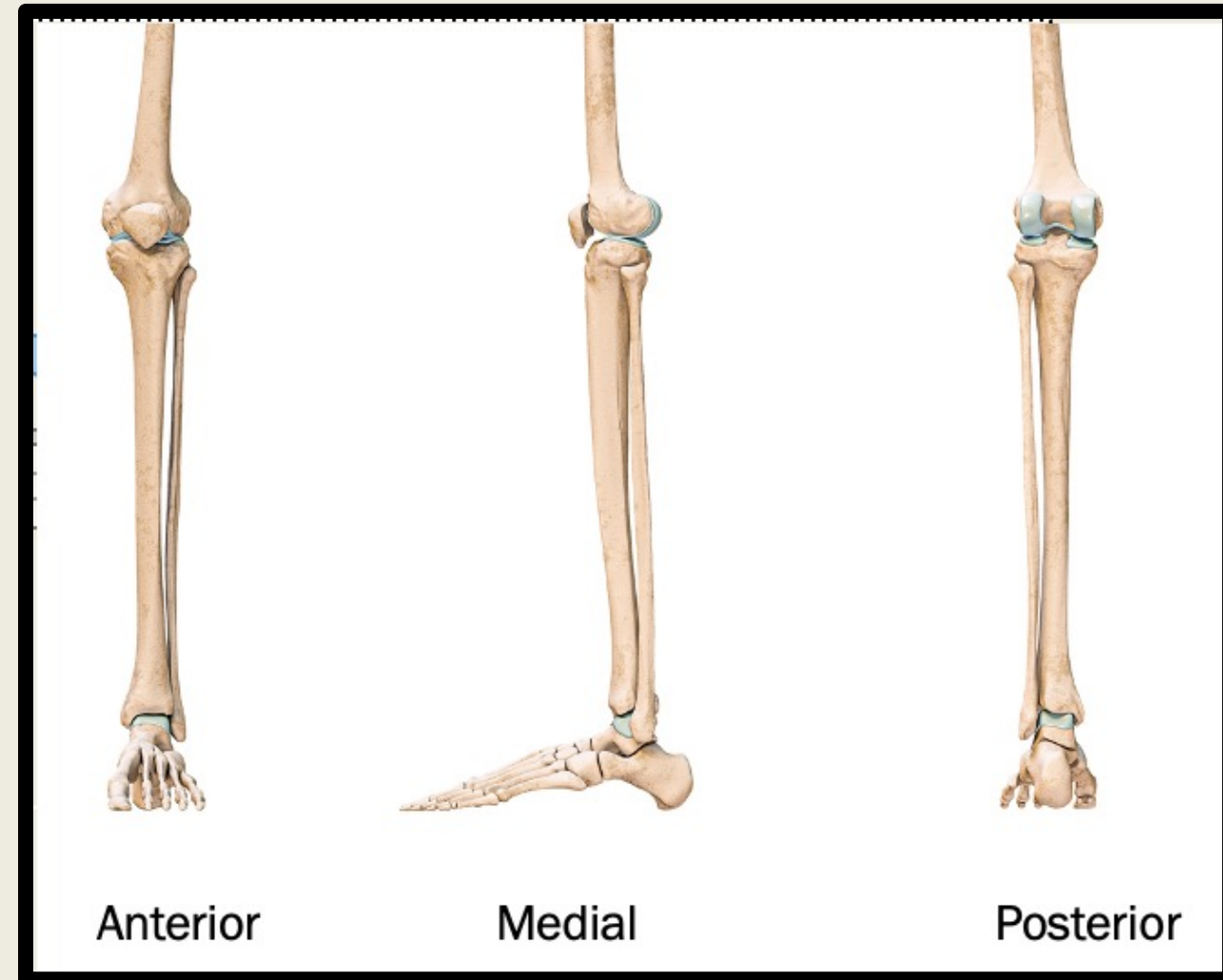
Hip Joint Bones

- Coxal bone
- Femur



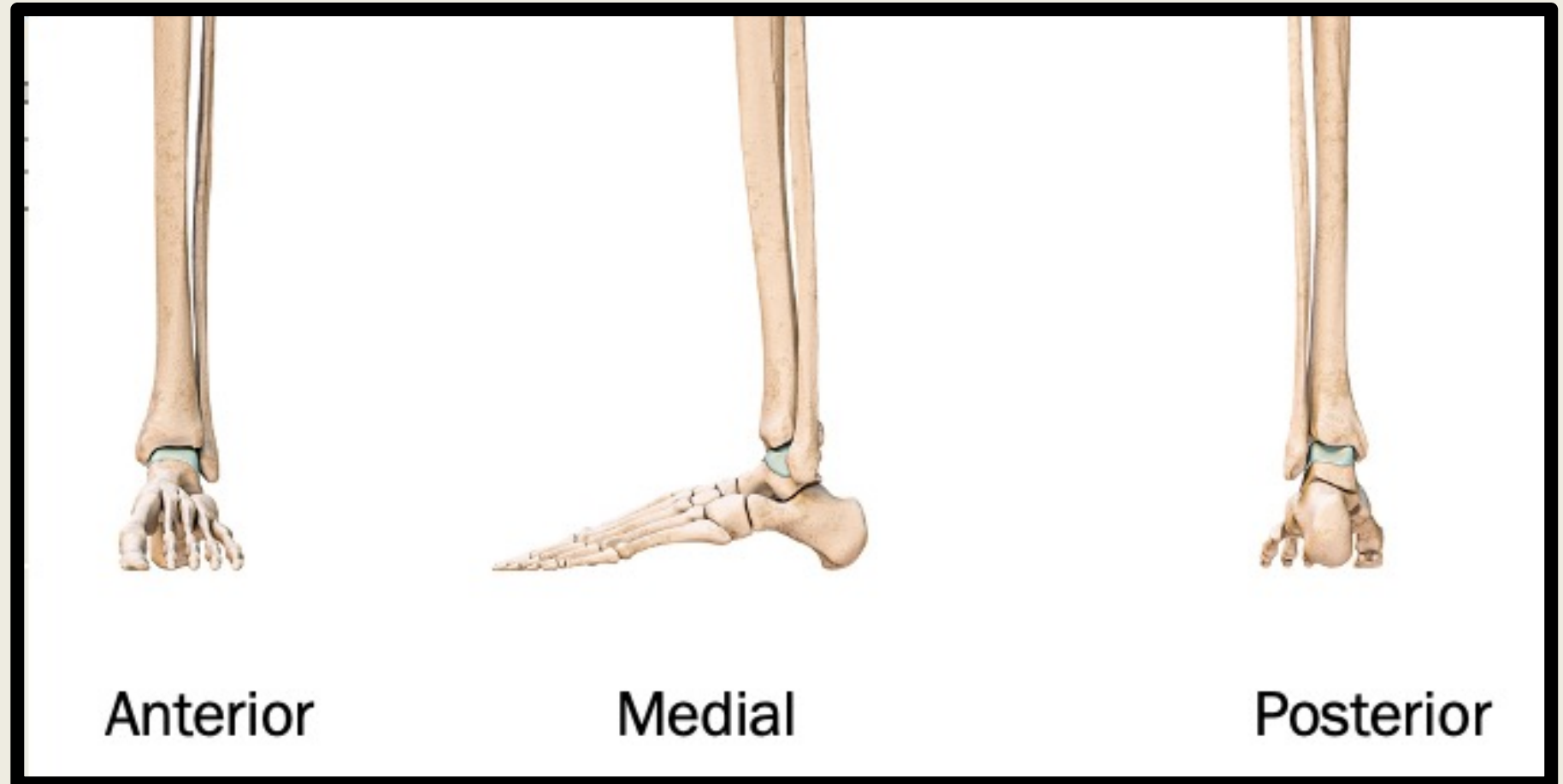
Knee Joint Bones

- Femur
- Tibia
- Patella



Ankle Joint Bones

- Tibia
- Fibula
- Talus



Type of Joint Based on Motion

- Triaxial
- Biaxial
- Monoaxial or uniaxial

Type of Joint Based on Shape

- Pivot joint
- Saddle joint
- Condylar or Ellipsoidal joint
- Planar or Gliding joint
- Hinge joint
- Ball and Socket joint

Type of Synovial Movement

- Abduction/adduction
- Circumduction
- Elevation/depression
- Flexion/extension/hyperextension
- Inversion/eversion
- Medial/lateral rotation
- Plantar flexion/dorsiflexion
- Pronation/supination
- Protraction/retraction
- Rotation